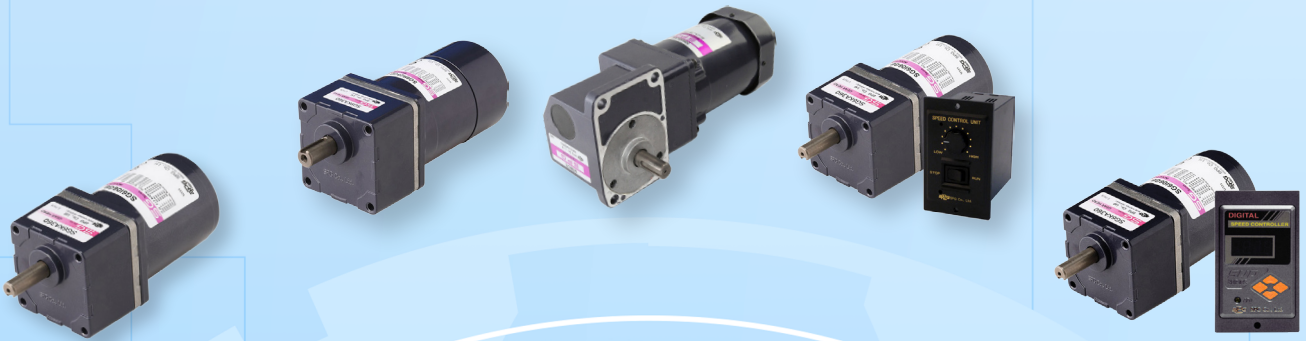




STANDARD AC GEARED MOTOR



Scan for 3D



MODEL (CODE SYSTEM)

MOTOR

MAKER	SIZE	MOTOR TYPE	OUTPUT	SHAFT TYPE	VOLTAGE	GEAR TYPE	SPECIAL TYPE	
S	9	I	40	G	B	H	E	
		<p>03 : 3W 90 : 90W 06 : 6W 120 : 120W 15 : 15W 150 : 150W 25 : 25W 180 : 180W 40 : 40W 200 : 200W 60 : 60W</p>		<p>G : Gear Type S : Straight Type D : D-Cut Type K : Key Type</p>		<p>H : Heavy Impact L : Light Impact</p> <p>A : 1ØAC 110V 60Hz (4Pole) B : 1ØAC 220V 60Hz (4Pole) C : 1ØAC 100V 50/60Hz (4Pole) D : 1ØAC 200V 50/60Hz (4Pole) E : 1ØAC 115V 60Hz (4Pole) X : 1ØAC 220~240V 50Hz (4Pole) U : 3ØAC 200V 50/60Hz (4Pole) T : 3ØAC 220V 50/60Hz (4Pole) S : 3ØAC 380~440V 50/60Hz (4Pole)</p>		<p>E : Electro-magnetic Brake Type T : Terminal Box Type (Terminal Block Type) T1 : Terminal Box Type (PCB Type Terminal Block) (25~90W) T2 : Conduit Box Type (25~90W) B : Semi-Brake Type S : Variable Speed Control (Pack Type) S12 : T.G Voltage 12V Type S24 : T.G Voltage 24V Type V : Variable Speed Control (Unit Type) V12 : T.G Voltage 12V Type ES : Electro-Magnetic Brake Variable Speed Control (Pack Type) ES12 : T.G Voltage 12V Type ES24 : T.G Voltage 24V Type</p>
		<p>I : Induction Motor R : Reversible Motor</p>						
		<p>6 : □60(mm) 7 : □70(mm) 8 : □80(mm) 9 : □90(mm)</p>						
<p>S : SPG Co., Ltd.</p>								

*** NOTE 1** 'H' & 'L' type are applied to over 40W.
 • 'H' type is the standard for over 60W.
 • 'L' type is the standard for over 40W.

*** NOTE 2** Key Type are applied to over □80 15W

GEARHEAD

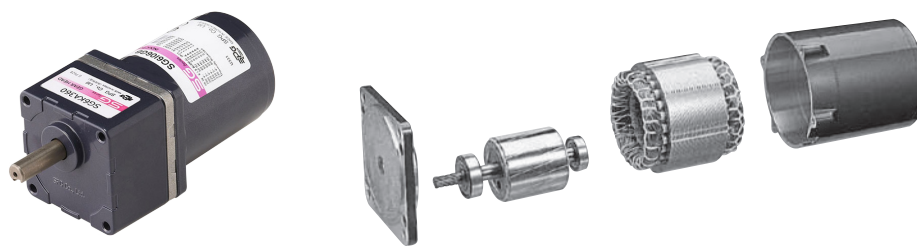
MAKER	SIZE	SHAFT TYPE	OUTPUT	GEAR RATIO	BEARING TYPE	SHAFT IMPACT TYPE	SPECIAL TYPE
S	9	K	C	36	B	H	S
		<p>T : 3W C : 60W~120W A : 6W~25W D : 60W~120W B : 40W H : 150W~200W</p>		<p>B : Ball bearing + Metal bearing (6W~40W) All Ball bearing (60W) B1 : All Ball bearing (6W~40W) M : Metal bearing (6W~40W)</p>		<p>S : Flange Type</p> <p>H : Heavy Impact L : Light Impact</p>	
		<p>Reduction Ratio(36:1/36)</p>					
		<p>S : Straight Type D : D-Cut Type K : Key Type</p>					
		<p>6 : □60(mm) 7 : □70(mm) 8 : □80(mm) 9 : □90(mm)</p>					
<p>S : SPG Co., Ltd.</p>							

*** NOTE** 'H' & 'L' type are applied to over 40W.
 • 'H' type is the standard for over 60W.
 • 'L' type is the standard for over 40W.

SPEED CONTROLLER (UNIT TYPE)

MAKER	CONTROLLER TYPE	OUTPUT	TYPE	VOLTAGE	T.G VOLTAGE		
S	U	A	40	I	B		
		<p>06 : 6W 25 : 25W 90 : 90W 715 : 15W(□70) 40 : 40W 120 : 120W 15 : 15W(□80) 60 : 60W 180 : 180W</p>		<p>A : Analogue Type D : Digital Type</p>		<p>V12 : T.G Voltage 12V Type</p> <p>A : 1ØAC 110V 60Hz (4Pole) B : 1ØAC 220V 60Hz (4Pole) C : 1ØAC 100V 50/60Hz (4Pole) D : 1ØAC 200V 50/60Hz (4Pole) E : 1ØAC 115V 60Hz (4Pole) X : 1ØAC 220~240V 50Hz (4Pole)</p>	
		<p>I : Induction Motor</p>		<p>* NOTE Unit Type of Speed Controller does not have Reversible Motor. (715 Type : No marking)</p>			
		<p>U : Unit Type</p>					
<p>S : SPG Co., Ltd.</p>							

INDUCTION MOTOR



Specification at Frequency 50 Hz

Model	Poles	Output (W)	Voltage (V)	Duty	Rated Load			Starting Torque (N·m)	Capacitor (uF)	Gearhead
					Current (A)	Speed (rpm)	Torque (N·m)			
S6I06GXCE	4	6	1Ø 220	Cont.	0.08	1200	0.050	0.050	0.6	S6DA□B1
			1Ø 240		0.09		0.053	0.053		
S7I15IGXCE	4	15	1Ø 220	Cont.	0.16	1200	0.125	0.075	0.9	S7KA□B1
			1Ø 240		0.18		0.135	0.090		
S8I15GXCE	4	15	1Ø 220	Cont.	0.16	1200	0.130	0.095	1.0	S8KA□B1
			1Ø 240		0.17		0.140	0.110		
S8I25GXCE	4	25	1Ø 220	Cont.	0.23	1200	0.210	0.110	1.3	S8KA□B1
			1Ø 240		0.25		0.220	0.130		
S9I60GXLCE	4	40	1Ø 220	Cont.	0.34	1250	0.315	0.180	2.0	S9KB□B1L
			1Ø 240		0.37		0.335	0.210		
S9I60GXHCE	4	60	1Ø 220	Cont.	0.47	1300	0.460	0.320	3.5	S9KC□BH
			1Ø 240		0.50		0.490	0.390		
S9I90GXHCE	4	90	1Ø 220	Cont.	0.68	1300	0.690	0.480	5.0	S9KC□BH
			1Ø 240		0.72		0.720	0.520		
S8I25GTCE	4	25	3Ø 220	Cont.	0.28	1350	0.190	0.420	-	S8KA□B1
S9I60GTLCE	4	40	3Ø 220	Cont.	0.39	1350	0.300	0.760	-	S9KB□B1L
S9I60GTHCE	4	60	3Ø 220	Cont.	0.80	1350	0.440	1.135	-	S9KC□BH
S9I90GTHCE	4	90	3Ø 220	Cont.	0.68	1350	0.690	1.300	-	S9KC□BH
S9I150GTCE	4	150	3Ø 220	Cont.	1.00	1300	1.130	2.200	-	S9KH□B
S9I200GTCE	4	200	3Ø 220	Cont.	1.30	1300	1.500	3.000	-	S9KH□B
S8I25GSCE	4	25	3Ø 380	Cont.	0.14	1250	0.200	0.315	-	S8KA□B1
			3Ø 400		0.14		0.210	0.350		
			3Ø 415		0.15	1300	0.195	0.375		
			3Ø 440		0.15		0.210	0.440		
S9I60GSLCE	4	40	3Ø 380	Cont.	0.21	1300	0.320	0.630	-	S9KB□B1L
			3Ø 400		0.21		0.330	0.690		
			3Ø 415		0.21	1350	0.310	0.730		
			3Ø 440		0.21		0.320	0.820		
S9I60GSHCE	4	60	3Ø 380	Cont.	0.27	1300	0.460	0.825	-	S9KC□BH
			3Ø 400		0.29		0.470	0.930		
			3Ø 415		0.27	1350	0.460	0.995		
			3Ø 440		0.31		0.470	1.075		
S9I90GSHCE	4	90	3Ø 380	Cont.	0.32	1300	0.680	1.055	-	S9KC□BH
			3Ø 400		0.35		0.690	1.170		
			3Ø 415		0.33	1350	0.680	1.200		
			3Ø 440		0.35		0.690	1.330		
S9I150GSCE	4	150	3Ø 380	Cont.	0.46	1250	1.170	1.800	-	S9KH□B
			3Ø 400		0.49		0.970	1.900		
S9I200GSCE	4	200	3Ø 380	Cont.	0.62	1250	1.600	2.600	-	S9KH□B
			3Ø 400		0.64		1.600	3.000		

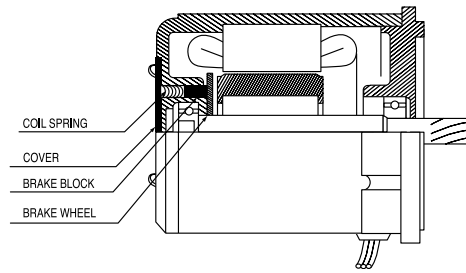
- CE marked at the end of model name indicates that it is thermally protected type which has received CE with built-in TP.

- For a three-phase 380V - 480V motor, be cautious when using the inverter.

- The insulation of winding becomes hot and may cause damage to motor.

- Please contact us if other operating voltages and frequency of the motor is required.

REVERSIBLE MOTOR

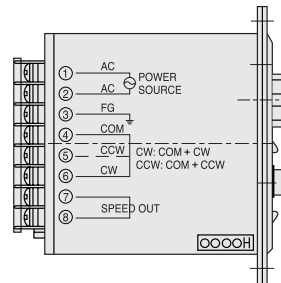


Specification at Frequency 50 Hz

Model	Poles	Output (W)	Voltage (V)	Duty	Rated Load			Starting Torque (N·m)	Capacitor (uF)	Gearhead
					Current (A)	Speed (rpm)	Torque (N·m)			
S6R06GXCE	4	5.8	1Ø 220	30min.	0.09	1200	0.047	0.050	0.7	S6DA□B1
		6	1Ø 240		0.10		0.050			
S7R15GXCE	4	15	1Ø 220	30min.	0.17	1200	0.125	0.090	1.2	S7KA□B1
			1Ø 240		0.18		0.145	0.110		
S8R15GXCE	4	15	1Ø 220	30min.	0.16	1200	0.130	0.110	1.2	S8KA□B1
			1Ø 240		0.18		0.140	0.130		
S8R25GXCE	4	25	1Ø 220	30min.	0.26	1200	0.200	0.170	1.3	S8KA□B1
			1Ø 240		0.28		0.220	0.220		
S9R60GXLCE	4	40	1Ø 220	30min.	0.40	1250	0.320	0.300	3.0	S9KB□B1L
			1Ø 240		0.42		0.340	0.320		
S9R60GXHCE	4	60	1Ø 220	30min.	0.63	1250	0.480	0.600	5.0	S9KC□BH
			1Ø 240		0.67		0.500	0.630		
S9R90GXHCE	4	90	1Ø 220	30min.	0.82	1250	0.720	0.650	6.0	S9KC□BH
			1Ø 240		0.86		0.740	0.800		

- CE marked at the end of model name indicates that it is thermally protected type which has received CE with built-in TP

SPEED CONTROL MOTOR

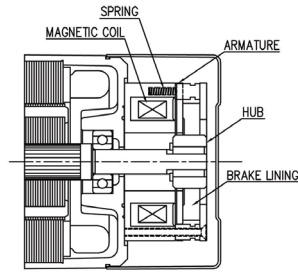


Specification at Frequency 50 Hz

Model	Poles	Output (W)	Voltage (V)	Duty	Speed Range (rpm)	Permissible Torque		Starting Torque (N·m)	Cap. (uF)	Gearhead
						at 1200 rpm (N·m)	at 90 rpm (N·m)			
S6I06GX-V12CE & SUA06IX-V12	4	6	1Ø 220	Cont.	90 - 1600	0.035	0.022	0.035	0.7	S6DA□B1
			1Ø 240			0.045	0.022	0.042		
S7I15GX-V12CE & SUA715X-V12	4	15	1Ø 220	Cont.	90 - 1600	0.105	0.050	0.070	0.9	S7KA□B1
			1Ø 240			0.125	0.060	0.085		
S8I15GX-V12CE & SUA15IX-V12	4	15	1Ø 220	Cont.	90 - 1600	0.120	0.035	0.055	1.0	S8KA□B1
			1Ø 240			0.140	0.035	0.060		
S8I25GX-V12CE & SUA25IX-V12	4	25	1Ø 220	Cont.	90 - 1600	0.150	0.050	0.100	1.5	S8KA□B1
			1Ø 240			0.180	0.050	0.120		
S9I60GXL-V12CE & SUA60IX-V12	4	40	1Ø 220	Cont.	90 - 1600	0.250	0.070	0.170	2.0	S9KB□B1L
			1Ø 240			0.300	0.070	0.210		
S9I60GXH-V12CE & SUA60IX-V12	4	60	1Ø 220	Cont.	90 - 1600	0.520	0.090	0.310	3.5	S9KC□BH
			1Ø 240			0.580	0.090	0.360		
S9I90GXH-V12CE & SUA90IX-V12	4	90	1Ø 220	Cont.	90 - 1600	0.540	0.220	0.460	5.0	S9KC□BH
			1Ø 240			0.610	0.220	0.550		

- CE marked at the end of model name indicates that it is thermally protected type which has received CE with built-in TP

BRAKE MOTOR



Specification at Frequency 50 Hz

Model	Poles	Output (W)	Voltage (V)	Duty	Rated Load			Starting Torque (N·m)	Capacitor (uF)	Gearhead
					Current	Speed	Torque			
					(A)	(rpm)	(N·m)			
S6R06GX-ECE	4	6	1Ø 220	30min.	0.09	1200	0.050	0.055	0.7	S6DA□B1
			1Ø 240		0.10		0.052	0.065		
S7R15IGX-ECE	4	15	1Ø 220	30min.	0.16	1200	0.125	0.100	1.2	S7KA□B1
			1Ø 240		0.18		0.145	0.120		
S8R15GX-ECE	4	15	1Ø 220	30min.	0.16	1200	0.130	0.125	1.0	S8KA□B1
			1Ø 240		0.17		0.140	0.145		
S8R25GX-ECE	4	25	1Ø 220	30min.	0.25	1200	0.200	0.210	1.3	S8KA□B1
			1Ø 240		0.27		0.210	0.250		
S9R40GXL-ECE	4	40	1Ø 220	30min.	0.40	1250	0.320	0.330	3.0	S9KB□B1L
			1Ø 240		0.43		0.340	0.400		
S9R60GXH-ECE	4	60	1Ø 220	30min.	0.58	1300	0.460	0.600	5.0	S9KC□BH
			1Ø 240		0.61		0.490	0.700		
S9R90GXH-ECE	4	90	1Ø 220	30min.	0.71	1300	0.690	0.680	6.0	S9KC□BH
			1Ø 240		0.75		0.720	0.860		
S8I25GT-ECE	4	25	3Ø 220	Cont.	0.28	1350	0.190	0.420	-	S8KA□B1
S9I40GTL-ECE	4	40	3Ø 220	Cont.	0.39	1350	0.300	0.760	-	S9KB□B1L
S9I60GTH-ECE	4	60	3Ø 220	Cont.	0.80	1350	0.440	1.135	-	S9KC□BH
S9I90GTH-ECE	4	90	3Ø 220	Cont.	0.68	1350	0.680	1.300	-	S9KC□BH
S8I25GS-ECE	4	25	3Ø 380	Cont.	0.14	1250	0.200	0.315	-	S8KA□B1
			3Ø 400		0.14		0.210	0.350		
			3Ø 415		1300	0.15	0.195	0.375		
			3Ø 440			0.15	0.210	0.440		
S9I40GS-ECE	4	40	3Ø 380	Cont.	0.21	1300	0.320	0.630	-	S9KB□B1L
			3Ø 400		0.21		0.330	0.690		
			3Ø 415		1350	0.21	0.310	0.730		
			3Ø 440			0.21	0.320	0.820		
S9I60GS-ECE	4	60	3Ø 380	Cont.	0.27	1300	0.460	0.825	-	S9KC□BH
			3Ø 400		0.29		0.470	0.930		
			3Ø 415		1350	0.27	0.460	0.995		
			3Ø 440			0.31	0.470	1.075		
S9I90GS-ECE	4	90	3Ø 380	Cont.	0.32	1300	0.680	1.055	-	S9KC□BH
			3Ø 400		0.35		0.690	1.170		
			3Ø 415		1350	0.33	0.680	1.200		
			3Ø 440			0.35	0.690	1.330		

- CE marked at the end of model name indicates that it is thermally protected type which has received CE with built-in TP.
- For a three-phase 380V - 480V motor, be cautious when using the inverter.
- The insulation of winding becomes hot and may cause damage to motor.
- Please contact us if other operating voltages and frequency of the motor is required.

MOTOR SPECIFICATION WITH GEARHEAD

Model	Output	Ratio	3	3.6	5	6	7.5	9	10	12.5
		rpm	500	416	300	250	200	166	150	120
S6DA□B1	6W	Permissible Torque (N•m)	0.127	0.147	0.206	0.255	0.314	0.382	0.421	0.529
S7KA□B1	15W		0.314	0.382	0.530	0.637	0.794	0.951	1.059	1.324
S8KA□B1	15W		0.333	0.402	0.559	0.666	0.833	1.000	1.107	1.392
S8KA□B1	25W		0.519	0.627	0.872	1.049	1.313	1.568	1.744	2.185
S9KB□B1L	40W		0.813	0.970	1.352	1.617	2.029	2.430	2.695	3.371
S9KC□BH	60W		1.196	1.431	1.989	2.381	2.989	3.577	3.969	4.469
S9KC□BH	90W		1.784	2.146	2.979	3.577	4.469	5.361	5.958	6.703
S9KH□B	150W		2.264	2.717	3.773	4.528	5.660	6.792	7.546	8.489
S9KH□B	200W		3.813	4.609	6.355	7.626	9.532	11.470	12.750	14.320

Model	Output	Ratio	15	18	20	25	30	26	40	50
		rpm	100	83	75	60	50	41	37	30
S6DA□B1	6W	Permissible Torque (N•m)	0.627	0.755	0.755	0.951	1.137	1.362	1.519	1.715
S7KA□B1	15W		1.587	1.902	1.902	2.373	2.854	3.423	3.805	4.276
S8KA□B1	15W		1.666	1.999	1.999	2.509	3.009	3.606	4.008	4.530
S8KA□B1	25W		2.617	3.146	3.146	3.940	4.724	5.664	6.292	7.115
S9KB□B1L	40W		4.047	4.861	4.861	6.086	7.301	8.761	9.731	9.800
S9KC□BH	60W		5.370	6.439	7.154	8.085	9.702	11.660	12.940	16.170
S9KC□BH	90W		8.046	9.663	10.780	12.150	14.600	17.440	19.400	19.600
S9KH□B	150W		10.240	12.290	13.650	15.360	18.340	21.970	24.420	29.420
S9KH□B	200W		17.160	20.590	22.880	25.740	29.420	29.420	29.420	29.420

Model	Output	Ratio	60	75	90	100	120	150	180	200
		rpm	25	20	16	15	12	10	8	7.5
S6DA□B1	6W	Permissible Torque (N•m)	2.058	2.568	2.942	2.942	2.942	2.942	2.942	2.942
S7KA□B1	15W		4.900	4.900	4.900	4.900	4.900	4.900	4.900	4.900
S8KA□B1	15W		5.433	6.786	7.840	7.840	7.840	7.840	7.840	7.840
S8KA□B1	25W		7.840	7.840	7.840	7.840	7.840	7.840	7.840	7.840
S9KB□B1L	40W		9.800	9.800	9.800	9.800	9.800	9.800	9.800	9.800
S9KC□BH	60W		19.400	19.600	19.600	19.600	19.600	19.600	19.600	19.600
S9KC□BH	90W		19.600	19.600	19.600	19.600	19.600	19.600	19.600	19.600
S9KH□B	150W		29.420	29.420	29.420	29.420	29.420	29.420	29.420	29.420
S9KH□B	200W		29.420	29.420	29.420	29.420	29.420	29.420	29.420	29.420

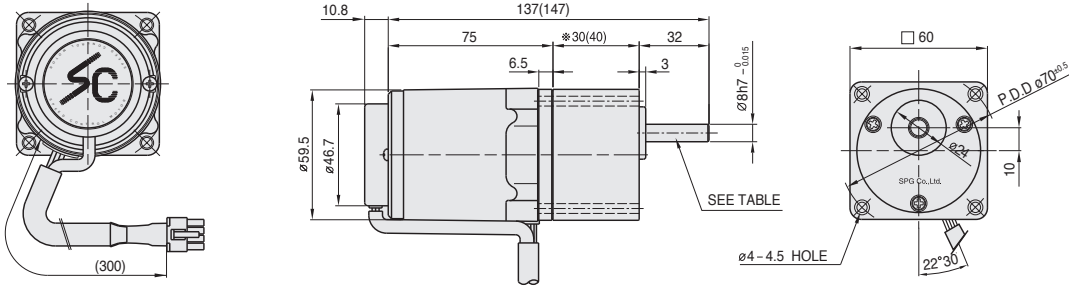
- The code in □ of gearhead model is for gear ratio.
- It is the permissible torque of the assembled motor and gearhead.
- The permissible torque of the motor and inter-decimal gearhead are 30, 50, 80, 100 and 200 kg•cm respectively. (except S9KH□B).
- Light grey color indicates that the output shaft of the geared motor rotates in the same direction as the output shaft of the motor. Others indicate rotation in the opposite direction.
- Speed (rpm) is based on synchronous speed (1500 rpm at 50 Hz) divided by gear ratio. The actual rotation speed can be 2~20% less than displayed value depending on the load.
- Please contact us if other type of output shafts and bearing of gearhead is required.

MOTOR DIMENSION

6W

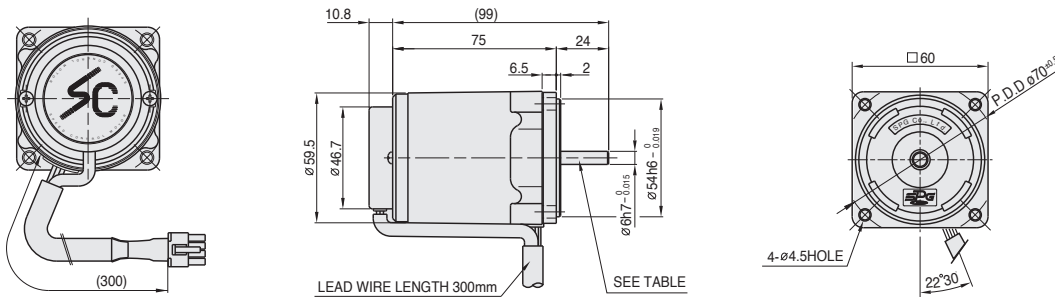
+ GEARED MOTOR

- * MOTOR MODEL : S6106G □ -V12
- * HEAD MODEL : S6 □ A3 □ ~S6 □ A250 □



+ MOTOR

- * MOTOR MODEL : S6106 □ □ -V12



+ GEAR HEAD (SPEC for output shaft of gearhead)

MODEL	(TYPES OF OUTPUT SHAFT)
STRAIGHT TYPE	
S6SA3□ ~S6SA250□	
D-CUT TYPE	
S6DA3□ ~S6DA250□	
KEY TYPE	
S6KA3□ ~S6KA250□	

+ KEY SPEC

GEAR HEAD

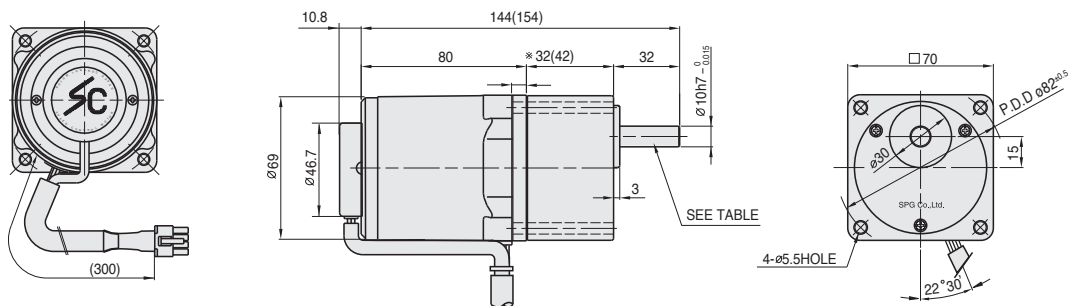
+ MOTOR (SPEC for output shaft of motor)

MODEL	(TYPES OF OUTPUT SHAFT)
GEAR TYPE	
S8106G□-V12	
STRAIGHT TYPE	
S6106S□-V12	
D-CUT TYPE	
S6106C□-V12	

15W

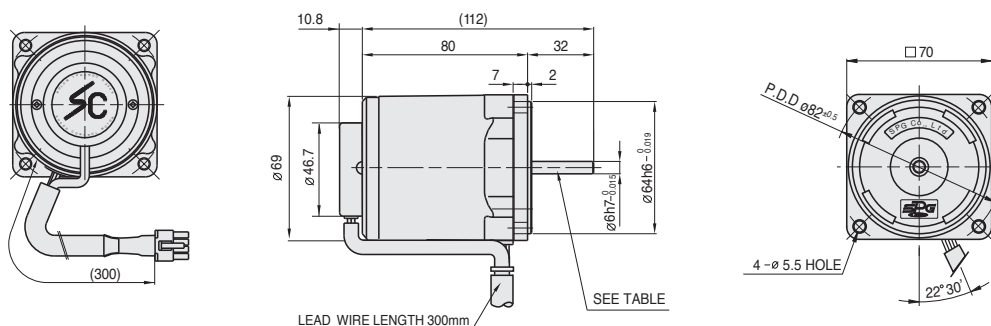
+ GEARED MOTOR

- * MOTOR MODEL : S7115G □ -V12
- * HEAD MODEL : S7 □ A3 □ ~S7 □ A200 □



+ MOTOR

- * MOTOR MODEL : S7115G □ -V12



+ GEAR HEAD (SPEC for output shaft of gearhead)

MODEL	(TYPES OF OUTPUT SHAFT)
STRAIGHT TYPE	
S7SA3□ ~S7SA200□	
D-CUT TYPE	
S7DA3□ ~S7DA200□	
KEY TYPE	
S7KA3□ ~S7KA200□	

+ KEY SPEC

GEAR HEAD

+ MOTOR (SPEC for output shaft of motor)

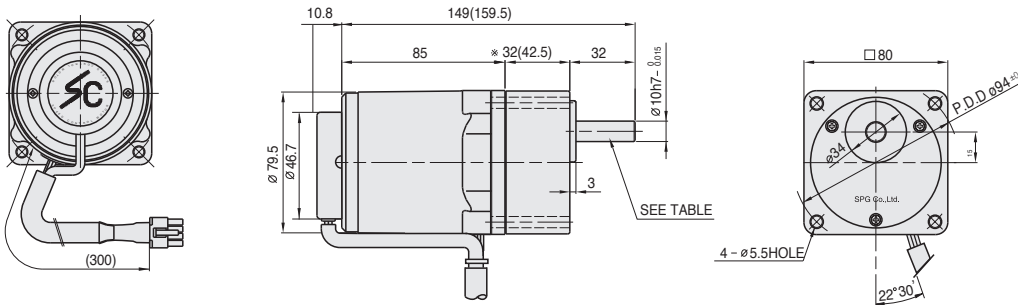
MODEL	(TYPES OF OUTPUT SHAFT)
GEAR TYPE	
S7115G□-V12	
STRAIGHT TYPE	
S7115S□-V12	
D-CUT TYPE	
S7115C□-V12	

MOTOR DIMENSION

15W & 25W

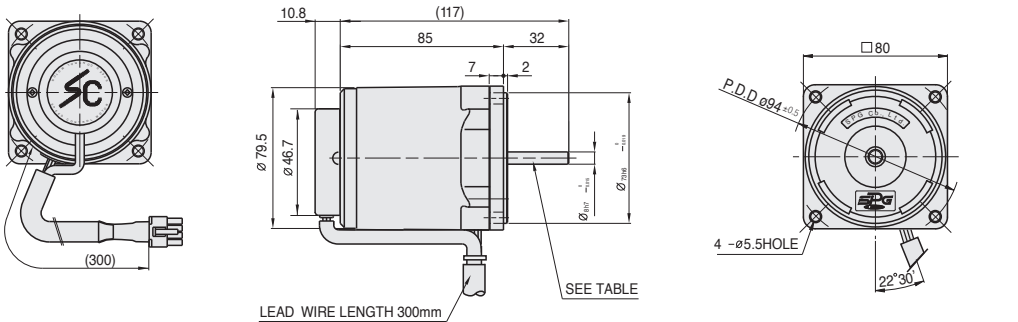
+ GEARED MOTOR

* MOTOR MODEL : S8(15,25)G□-V12
 * HEAD MODEL : S8□A3□~S8□A200□



+ MOTOR

* MOTOR MODEL : S8I(15,25)□□-V12



+ GEAR HEAD (SPEC for output shaft of gearhead)

MODEL	(TYPES OF OUTPUT SHAFT)
STRAIGHT TYPE	
S8SA3□ ~S8SA200□	
D-CUT TYPE	
S8DA3□ ~S8DA200□	
KEY TYPE	
S8KA3□ ~S8KA200□	

+ KEY SPEC

GEAR HEAD	MOTOR

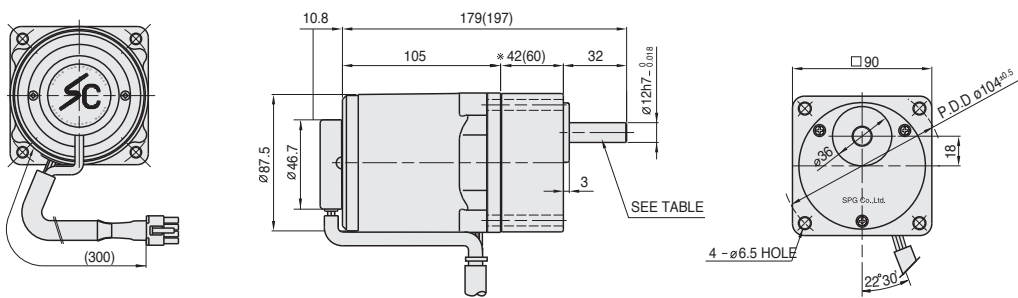
+ MOTOR (SPEC for output shaft of motor)

MODEL	(TYPES OF OUTPUT SHAFT)
GEAR TYPE	
S8H5G□-V12 S8I25G□-V12	
STRAIGHT TYPE	
S8I15□-V12 S8I25□-V12	
D-CUT TYPE	
S8I15□-V12 S8I25□-V12	
KEY TYPE	
S8I15□-V12 S8I25□-V12	

40W

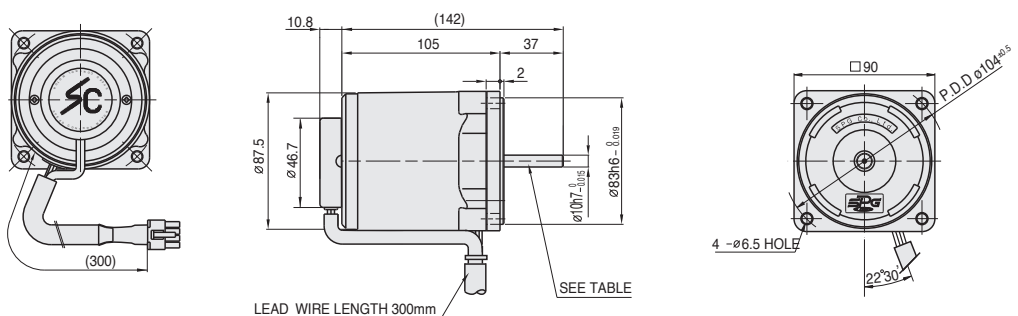
+ GEARED MOTOR

* MOTOR MODEL : S8(15,25)G□-V12
 * HEAD MODEL : S8□A3□~S8□A200□



+ MOTOR

* MOTOR MODEL : S8I(15,25)□□-V12



+ GEAR HEAD (SPEC for output shaft of gearhead)

MODEL	(TYPES OF OUTPUT SHAFT)
STRAIGHT TYPE	
S8SB3□ ~S8SB200□	
D-CUT TYPE	
S8DB3□ ~S8DB200□	
KEY TYPE	
S8KB3□ ~S8KB200□	

+ KEY SPEC

GEAR HEAD	MOTOR

+ MOTOR (SPEC for output shaft of motor)

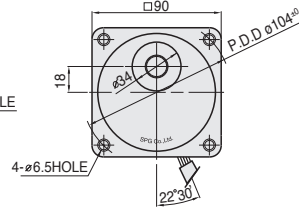
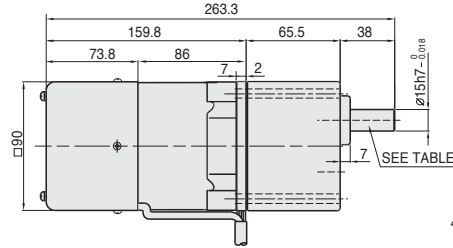
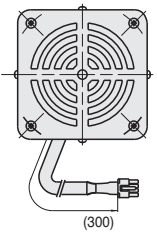
MODEL	(TYPES OF OUTPUT SHAFT)
GEAR TYPE	
S8I40G□-V12	
STRAIGHT TYPE	
S8I40□-V12	
D-CUT TYPE	
S8I40□-V12	
KEY TYPE	
S8I40□-V12	

MOTOR DIMENSION

60W

+ GEARED MOTOR

* HEAD MODEL : S9 □ C3B □ ~ S9 □ C200B □



+ GEAR HEAD

(SPEC for output shaft of gearhead)

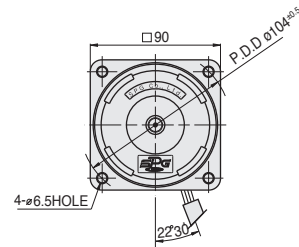
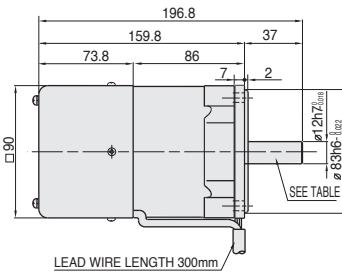
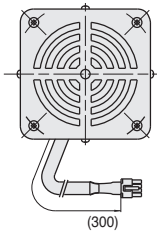
MODEL	(TYPES OF OUTPUT SHAFT)
STRAIGHT TYPE	
S9C3B□ ~S9C200B□	
D-CUT TYPE	
S9C3B□ ~S9C200B□	
KEY TYPE	
S9C3B□ ~S9C200B□	

+ KEY SPEC

GEAR HEAD	MOTOR

+ MOTOR

* MOTOR MODEL : S9160 □ □ □ -V12



+ MOTOR

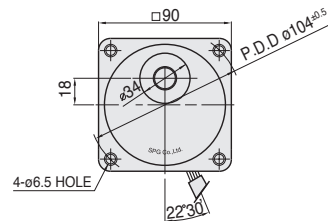
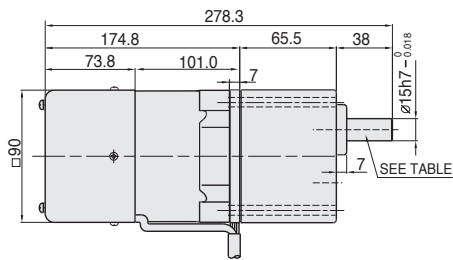
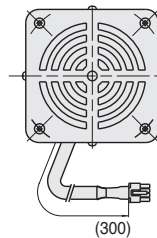
(SPEC for output shaft of motor)

MODEL	(TYPES OF OUTPUT SHAFT)
GEAR TYPE	
S9160G□□-V12	
STRAIGHT TYPE	
S9160S□-V12	
D-CUT TYPE	
S9160D□-V12	
KEY TYPE	
S9160K□-V12	

90W

+ GEARED MOTOR

* HEAD MODEL : S9 □ C3B □ ~ S9 □ C200B □



+ GEAR HEAD

(SPEC for output shaft of gearhead)

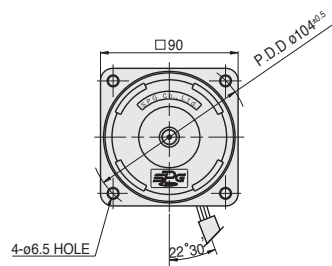
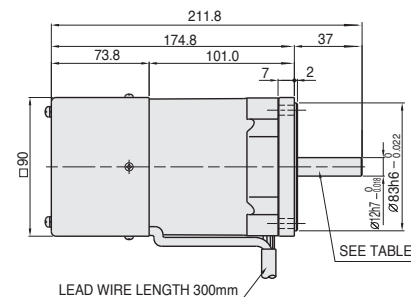
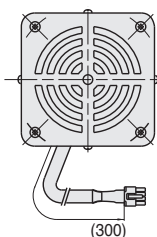
MODEL	(TYPES OF OUTPUT SHAFT)
STRAIGHT TYPE	
S9C3B□ ~S9C200B□	
D-CUT TYPE	
S9C3B□ ~S9C200B□	
KEY TYPE	
S9C3B□ ~S9C200B□	

+ KEY SPEC

GEAR HEAD	MOTOR

+ MOTOR

* MOTOR MODEL : S9190 □ □ □ -V12



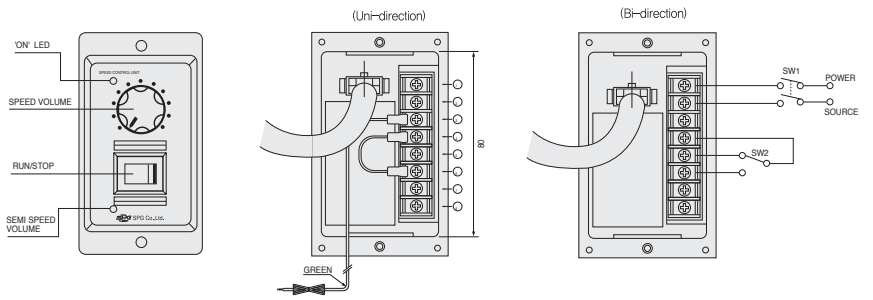
+ MOTOR

(SPEC for output shaft of motor)

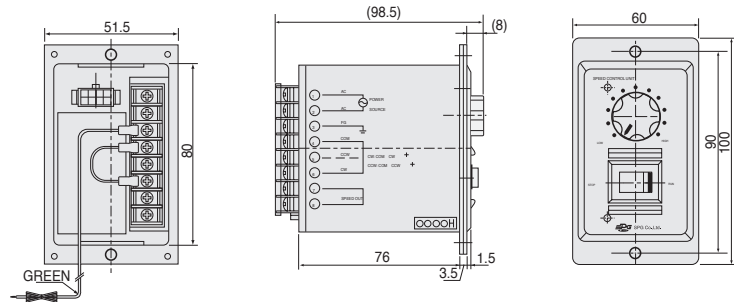
MODEL	(TYPES OF OUTPUT SHAFT)
GEAR TYPE	
S9190G□□-V12	
STRAIGHT TYPE	
S9190S□-V12	
D-CUT TYPE	
S9190D□-V12	
KEY TYPE	
S9190K□-V12	

SPEED CONTROLLER

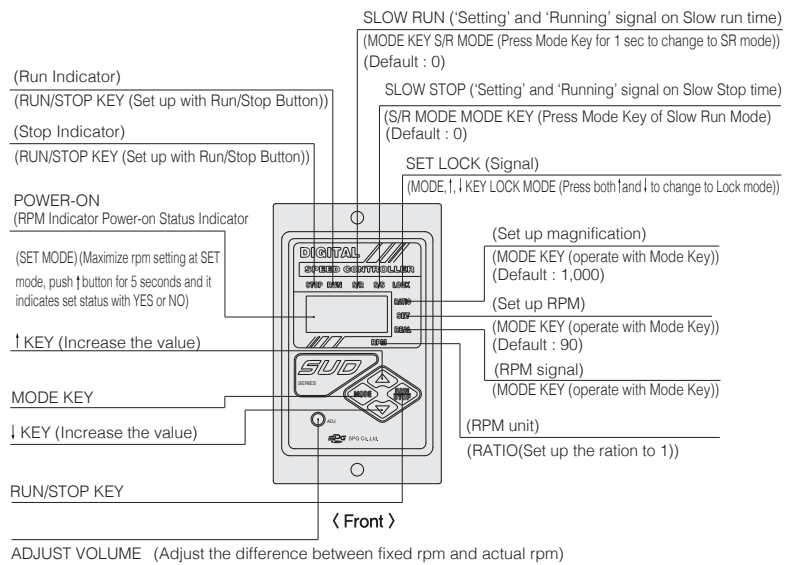
ANALOGUE TYPE SPEED CONTROLLER SUA



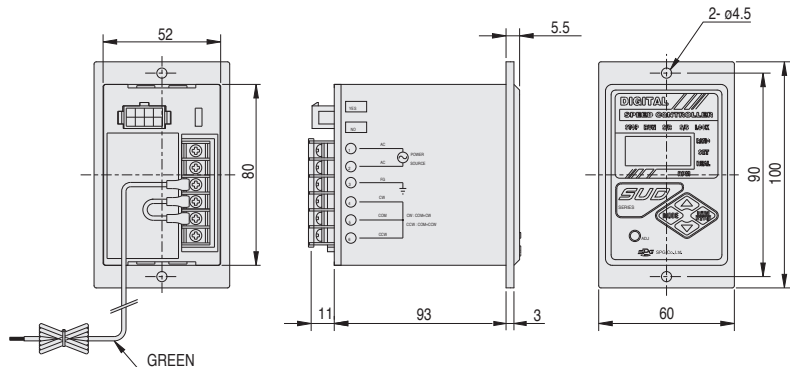
• DIMENSION



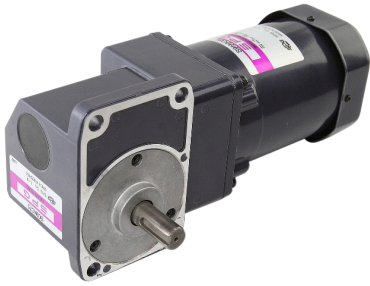
DIGITAL TYPE SPEED CONTROLLER SUD



• DIMENSION



RIGHT ANGLE GEARHEAD



- □80mm / □90mm, 25W / 40W / 60W / 90W
- Can be installed to a motor at a right angle using worn gear and special helical gears.
- Space saving of maximum 50% compared to existing square boxes.
- Ratio can be selected in between 1/3 and 1/180, and is shown in the cover of the gear head

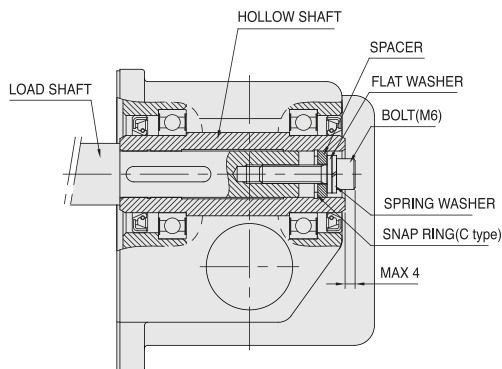
RIGHT ANGLE GEAR HEAD CODING SYSTEM

MAKER MODEL	SIZE	SHAFT TYPE	OUTPUT	GEAR RATIO	SPECIAL TYPE
SC	9	K	C	180	—
SC : SPG Crossing Gear Head	8 : □80mm 9 : □90mm	K : Key type H : Hollow shaft	A : 25W B : 40W C : 60W/90W	3~180 : Reduction Ratio	

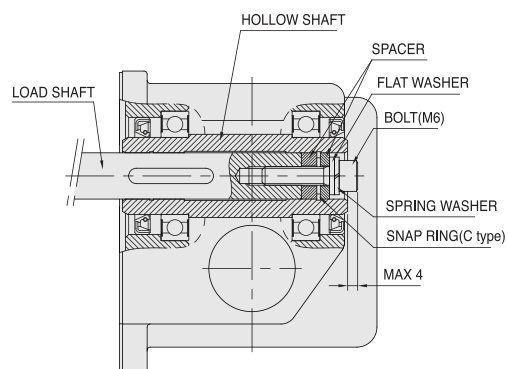
Specification of Gearhead

Type	Ratio	Maximum Permissible Torque (N·m)	Permissible Overhung Load		Permissible Thrust Load (N)	Transfer Efficiency
			Distance 10mm (N)	Distance 20mm (N)		
SC8HA□	3 ~ 180	8.0	250.0	220.0	100.0	50 ~ 60%
SC9HB□	3 ~ 180	10.0	350.0	310.0	200.0	60 ~ 68%
SC9HC□	3 ~ 180	20.0	560.0	500.0	250.0	50 ~ 68%
SC8KA□	3 ~ 18	8.0	100.0	150.0	100.0	50 ~ 60%
	25 ~ 180		200.0	300.0		
SC9KB□	3 ~ 18	10.0	250.0	350.0	200.0	60 ~ 68%
	25 ~ 180		300.0	450.0		
SC9KC□	3 ~ 9	20.0	400.0	500.0	250.0	50 ~ 68%
	12.5 ~ 25		450.0	600.0		
	30 ~ 180		500.0	700.0		

- Light grey color indicate that it is the distance from the flange mounting surface.
- The code in □ of gearhead model is gear ratio.
- The efficiency referenced may vary when applied
- All output shaft diameter rotates in an opposite way to that of a motor



(Stepped load shaft)



(Straight load shaft)

MOUNTING PLATE FOR MOTOR AND GEADHEAD

□ 60mm

MODEL : SPL-6A
 WEIGHT - 45g, MATERIAL - AI
(APPLICATION ITEMS)
 GEARHEAD : S6□A
 MOTOR : S6□06

□ 70mm

MODEL : SPL-7A
 WEIGHT - 75g, MATERIAL - AI
(APPLICATION ITEMS)
 GEARHEAD : S7□A
 MOTOR : S7□15

□ 80mm

MODEL : SPL-8A
 WEIGHT - 120g, MATERIAL - AI
(APPLICATION ITEMS)
 GEARHEAD : S8□A
 MOTOR : S8□(15,25)

□ 90mm

MODEL : SPL-9A
 WEIGHT - 140g, MATERIAL - AI
(APPLICATION ITEMS)
 GEARHEAD : S9□B
 MOTOR : S9□40~200

□ 90mm

MODEL : SPL-9SA
 WEIGHT - 270g, MATERIAL - AI
(APPLICATION ITEMS)
 GEARHEAD : S9□C(L, H)
 GEARHEAD : S9□B(L, H)
 MOTOR : S9□40~200(L, H)
 TYPE : PLATE
 (When needed stronger mouting plate.)

□ 90mm

MODEL : SPL-9SB
 WEIGHT - 270g, MATERIAL - AI
(APPLICATION ITEMS)
 GEARHEAD : S9□D□B, S9□H□B



บริษัท นานดีอินเตอร์เทรด จำกัด
NANDEE INTER-TRADE CO., LTD.

314,316,318,320,322 ซอยจันทน์32 ถนนจันทน์ แขวงทุ่งวัดดอน เขตสาทร กทม. 10120

☎ : 0-2675-8239
 LINE : @nandeeintertrade
 f : nandeeintertrade
 🌐 : www.nandee.co.th
 ✉ : marketing@nandee.co.th
 sales@nandee.co.th