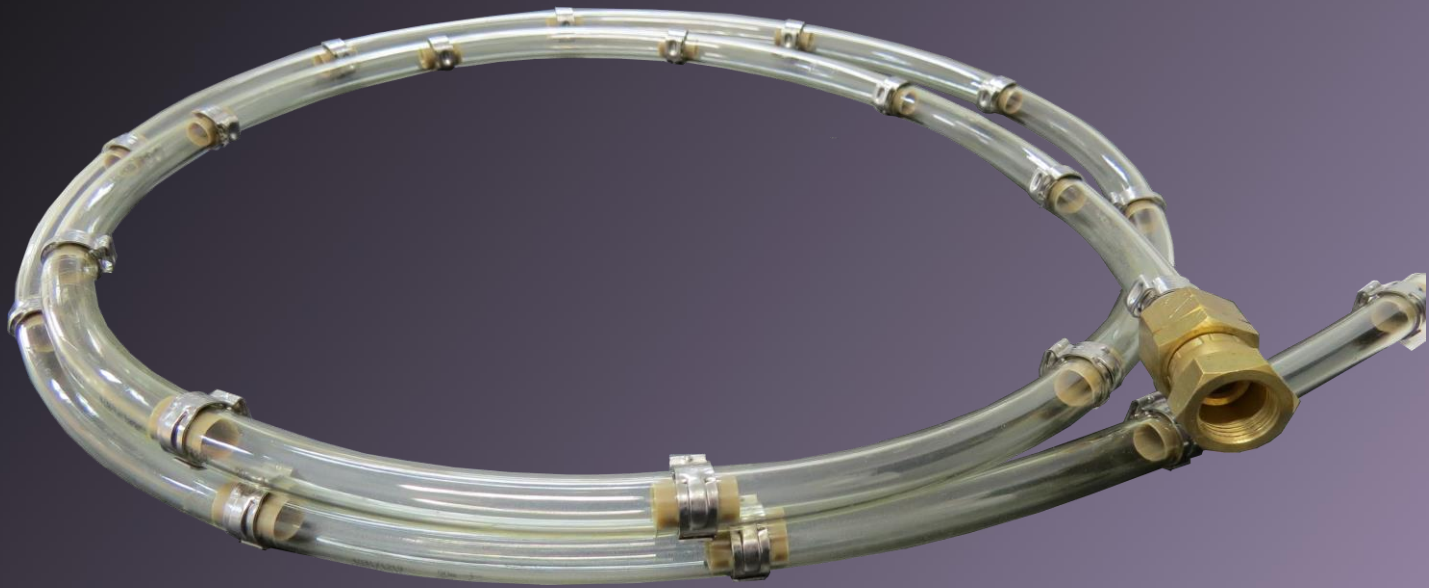
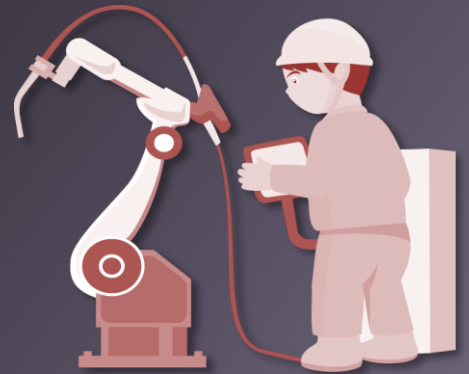


 **CHIYODA**

For Welding wire
FLECON TUBING

NEW!



*Measures against poor feeding for
welding wire*

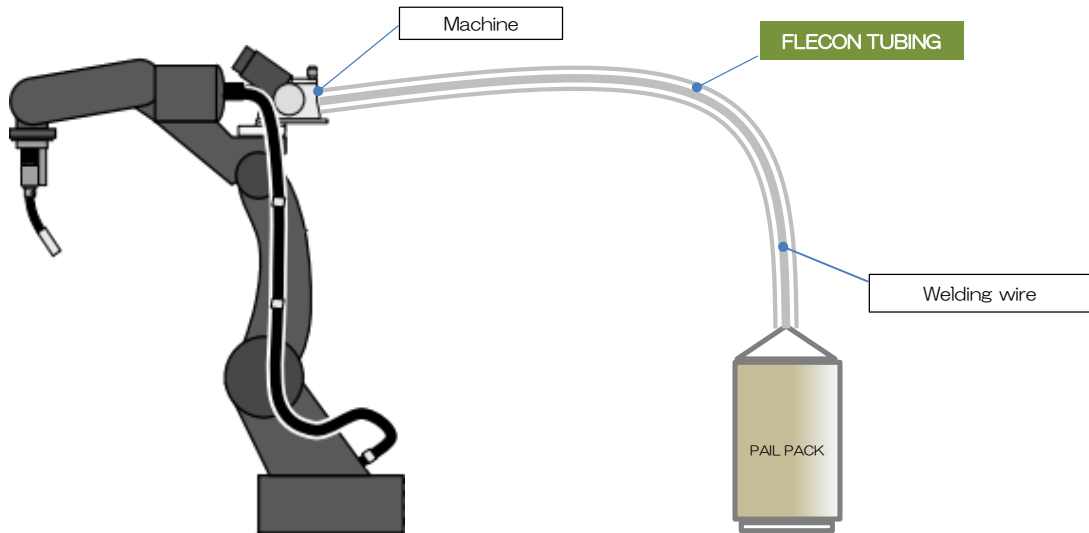
● Improving durability for piping system of welding wire

Resin sleeve is inside tubing and reduce the friction due to welding wire.

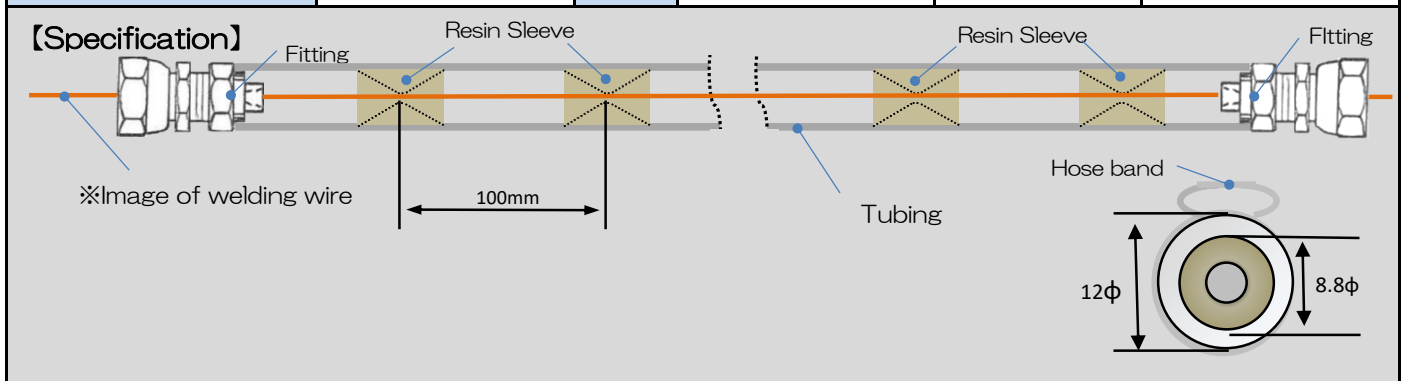
The shape of resin sleeve help smooth feeding and reduce maintenance time.

● Easy installation

Fitting is installed in both side. It is easy for piping.



Model	Fitting	Length	Tubing used	Resin sleeve	Applicable wire
FMTP-2	9/16-18UNF ※Both side of tubing	2M	Polyurethane MTP-12 (12mm×9mm)	8.8φ×15L (Containing PEEK glass fiber)	0.6mm~1.2mm
FMTP-3		3M			
FMTP-4		4M			
FMTP-5		5M			



บริษัท นานดีอินเตอร์เทรด จำกัด
NANDEE INTER-TRADE CO., LTD.

314,316,318,320,322 ซอยจันทน์ 32 ถนนจันทน์ แขวงทุ่งวัดดอน เขตสาทร กทม. 10120
Tel : 0-2675-8239 E-mail : info@nandee.co.th http://www.nandee.co.th



Chiyoda Tsusho Co., Ltd.

Address

1-21-1 Kamiikedai Ohta-ku, Tokyo 1450064

TEL 03-3727-4051 FAX 03-3727-4056

Web: [Http://www.chiyoda-pneumatic.co.jp/en](http://www.chiyoda-pneumatic.co.jp/en)

