

TOUCH CONNECTOR FUJI SERIES COOLING WATER

ข้อต่อทนความร้อนสูงถึง **200°C**

แหวนล็อกสายสามารถหมุนได้ **360°**
ถอดเปลี่ยนง่าย ไม่กีดสายด้วยระบบ **C-ring**

O-ring (FKM)
ทนความร้อน

ข้อต่อทนความร้อน รูปทรงต่างๆ



MALE



FEMALE



LONG MALE ELBOW



MALE ELBOW



UNION TEE



L CONNECTOR



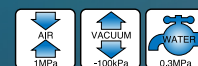
HOSE CONNECTOR

สายทนความร้อนสูง



P-FLEX

- ทนความร้อนได้สูงถึง **80°C**
- รับแรงดันได้ถึง **0.3MPa**

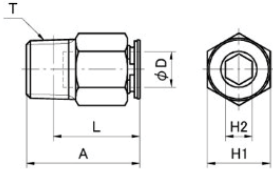


TEFLON

- ทนความร้อนได้สูงถึง **260°C**
- รับแรงดันได้ถึง **0.8MPa**

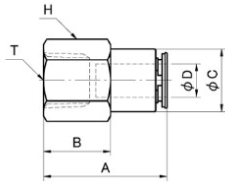


MALE CONNECTOR



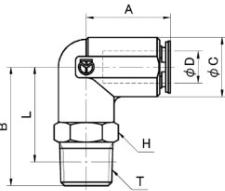
Model	A	Tube O. D. ϕD	Spanner Flats		L	Thread T	Tube Insertion Depth	Weight (g)
			H1	H2				
8-01M-V	26.7	8	14.0	5.0	22.7	R1/8	17.0	15.5
8-02M-V	25.2	8	14.0	6.0	19.2	R1/4	17.0	16.5
8-03M-V	20.7	8	17.0	6.0	14.3	R3/8	17.0	22.5
10-01M-V	27.8	10	17.0	5.0	23.8	R1/8	17.8	22.0
10-02M-V	29.1	10	17.0	6.0	23.1	R1/4	17.8	26.5
10-03M-V	27.1	10	17.0	8.0	20.7	R3/8	17.8	27.5
12-02M-V	32.1	12	19.0	7.0	26.1	R1/4	19.4	33.0
12-03M-V	28.1	12	19.0	9.0	21.7	R3/8	19.4	28.5
12-04M-V	26.1	12	21.0	9.0	18.1	R1/2	19.4	40.0

FEMALE CONNECTOR



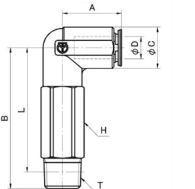
Model	A	B	ϕC	Tube O. D. ϕD	Spanner Flats H	Thread T	Tube Insertion Depth	Weight (g)
8-01F-V	26.5	14.0	15.0	8	17.0	Rc1/8	17.0	30.5
8-02F-V	29.5	16.0	15.0	8	17.0	Rc1/4	17.0	30.0
8-03F-V	30.5	17.0	15.0	8	21.0	Rc3/8	17.0	42.5
10-02F-V	30.3	16.0	17.0	10	17.0	Rc1/4	17.8	30.5
10-03F-V	31.3	17.0	17.0	10	21.0	Rc3/8	17.8	43.0
12-02F-V	31.9	17.0	19.0	12	19.0	Rc1/4	19.4	40.0
12-03F-V	32.9	18.0	19.0	12	21.0	Rc3/8	19.4	45.5
12-04F-V	35.9	19.5	19.0	12	24.0	Rc1/2	19.4	56.5

MALE ELBOW



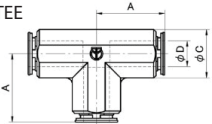
Model	A	B	ϕC	Tube O. D. ϕD	Spanner Flats H	L	Thread T	Tube Insertion Depth	Weight (g)
8-01MLB-V	21.2	27.0	15.0	8	14.0	23.0	R1/8	17.0	41.4
8-02MLB-V	21.2	30.0	15.0	8	14.0	24.0	R1/4	17.0	45.4
8-03MLB-V	21.2	31.0	15.0	8	17.0	24.6	R3/8	17.0	49.4
10-01MLB-V	23.0	28.0	18.0	10	17.0	24.0	R1/8	17.8	57.9
10-02MLB-V	23.0	31.0	18.0	10	17.0	25.0	R1/4	17.8	61.4
10-03MLB-V	23.0	32.0	18.0	10	17.0	25.6	R3/8	17.8	64.9
12-02MLB-V	25.6	34.5	20.0	12	19.0	28.5	R1/4	19.4	81.9
12-03MLB-V	25.6	35.5	20.0	12	19.0	29.1	R3/8	19.4	86.4
12-04MLB-V	25.6	38.5	20.0	12	21.0	30.5	R1/2	19.4	98.9

LONG MALE ELBOW



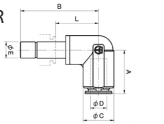
Model	A	B	ϕC	Tube O. D. ϕD	Spanner Flats H	L	Thread T	Tube Insertion Depth	Weight (g)
8-01M2LB-V	21.2	48.0	15.0	8	14.0	44.0	R1/8	17.0	62.4
8-02M2LB-V	21.2	51.0	15.0	8	14.0	45.0	R1/4	17.0	63.4
8-03M2LB-V	21.2	52.0	15.0	8	17.0	45.6	R3/8	17.0	79.4
10-02M2LB-V	23.0	54.0	18.0	10	17.0	48.0	R1/4	17.8	100.9
10-03M2LB-V	23.0	55.0	18.0	10	17.0	48.6	R3/8	17.8	98.4
12-02M2LB-V	25.6	58.5	20.0	12	19.0	52.5	R1/4	19.4	130.9
12-03M2LB-V	25.6	59.5	20.0	12	19.0	53.1	R3/8	19.4	131.9
12-04M2LB-V	25.6	64.5	20.0	12	21.0	56.5	R1/2	19.4	151.9

UNION TEE



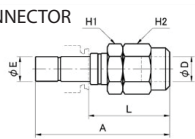
Model	A	ϕC	Tube O. D. ϕD	Tube Insertion Depth	Weight (g)
8-00UTB-V	21.2	15.0	8	17.0	42.3
10-00UTB-V	23.0	18.0	10	17.8	65.4
12-00UTB-V	25.6	20.0	12	19.4	84.9

L CONNECTOR



Model	A	B	ϕC	Tube O. D. ϕD	ϕE	L	Tube Insertion Depth	Weight (g)
8-00LCB-V	21.2	38.0	15.0	8	8.0	21.0	17.0	34.8
10-00LCB-V	23.0	39.5	18.0	10	10.0	21.7	17.8	53.9
12-00LCB-V	25.6	42.5	20.0	12	12.0	23.1	19.4	73.3

HOSE CONNECTOR



Model	A	Tube O. D. ϕD	ϕE	Spanner Flats		L	Tube Insertion Depth	Weight (g)
				H1	H2			
HF8-BRC	43.0	8	8.0	14.0	14.0	26.0	9.0	25.0
HF10-10RC	48.0	10	10.0	17.0	17.0	30.2	9.0	43.7
HF12-12RC	53.0	12	12.0	19.0	19.0	33.6	11.0	58.9

TEFLON TUBING



Media	Corrosive fluid, chemicals
Working Temperature Range	260°C Refer the List
Max. Burst Pressure	Refer the burst pressure correction Graph
Recommended Fittings	SUS316

Model	O.D.X I.D. (mm)	Burst Pressure (MPa)	Max. Working Pressure(MPa)	Min. Turning Radius (mm)	Tolerance (mm)	Weight (kg/m)
TF-4	4x2	10.0	2.0	30	± 0.1	0.02
TF-6	6x4	7.0	1.5	50	± 0.1	0.03
TF-8	8x6	4.0	1.0	80	± 0.1	0.05
TF-10	10x8	3.0	0.8	120	± 0.12	0.06
TF-12	12x10	3.0	0.8	200	± 0.15	0.10

P-FLEX TUBING



Media	Industrial water
Working Temperature Range	0-80°C
Max. Burst Pressure	3 MPa
Max. Working Pressure	0.3 MPa

Model	O.D.X I.D. (mm)	Min. Turning Radius (mm)	Tolerance (mm)	Weight (kg/m)	Color
8P	8x5	15	+0.05	0.037	CB CP
10P	10x6.5	25	+0.1	0.055	
12P	12x8	28	-0.2	0.076	

Water hammer considered in value above

Fitting used: Touch Connector, Touch Connector viton (Special order)



บริษัท นานดีอินเตอร์เทรด จำกัด
NANDEE INTER-TRADE CO., LTD.

314,316,318,320,322 ซอยจันทน์32 ถนนจันทน์ แขวงทุ่งวัดดอน เขตสาทร กทม. 10120

☎ : 0-2675-8239

🌐 : www.nandee.co.th

LINE : @nandeeintertrade

✉ : marketing@nandee.co.th

f : [nandeeintertrade](https://www.facebook.com/nandeeintertrade)

✉ : sales@nandee.co.th